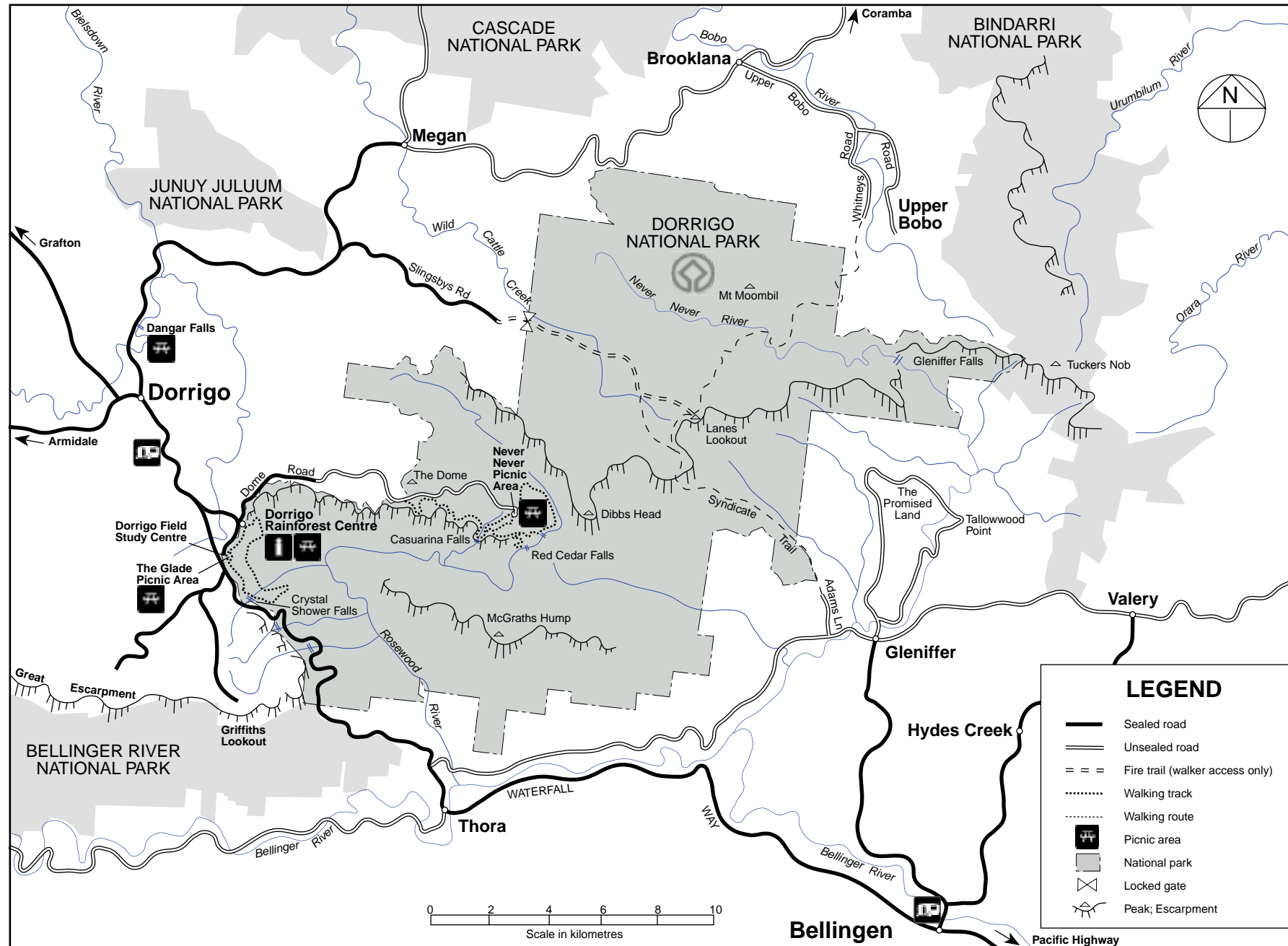


# Dorrigo National Park

WORLD HERITAGE CENTRAL EASTERN RAINFOREST RESERVES OF AUSTRALIA



## Features

Included on the World Heritage List in 1986, Dorrigo National Park is recognised as an area of exceptional natural beauty with significant habitats of outstanding universal value to science and conservation. One of Australia's most accessible World Heritage rainforests, the Park provides all visitors with an opportunity to experience and appreciate this unique environment.

## Location and access

Dorrigo National Park encompasses 11,732 ha of the Great Escarpment of the Dorrigo Plateau, one hours drive west of Coffs Harbour. Access is via Dome Road off the Waterfall Way about 2 kilometres east of Dorrigo. The park is open from 5am to 10pm.

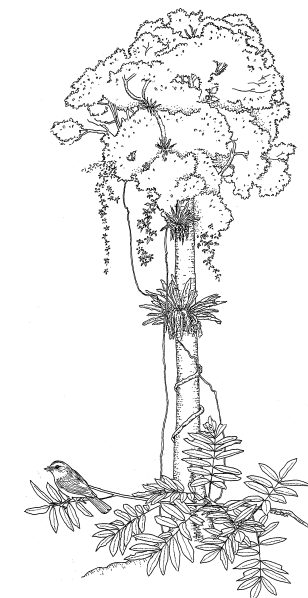
## Things to see and do

### Dorrigo Rainforest Centre



The visitor centre is open 9am to 5pm daily and provides an introduction to the CERRA World Heritage rainforests of north-eastern New South Wales. The Centre includes a National Parks shop, a new interpretive display and Canopy Cafe. The dramatic Skywalk boardwalk provides views over the rainforest canopy.

From the Rainforest Centre the **Lyrebird Link Track** is an easy short stroll (400m each way). It connects with the **Wonga Walk**, a 5.8km circuit walk through magnificent subtropical rainforest via the Walk with the Birds, Crystal Shower Falls and Tristania Falls.





# Dorrigo National Park

## WORLD HERITAGE AREA



### The Glade Picnic Area



The Glade is one kilometre by road or walking track from the Rainforest Centre. Start here for barrier-free access to **Walk with the Birds** boardwalk (200 metres return). The **Satinbird Stroll** (600 metre circuit) also begins here. The walk to **Crystal Shower Falls** (3.5 km, 1hr return) is steep but rewarding.

### Never Never Picnic Area



A scenic 10km drive along Dome Road (unsealed) ends in the secluded beauty of this remote picnic area. A range of walking tracks give access to waterfalls, warm temperate rainforest and wet sclerophyll forest.

**Rosewood Creek Track** - 5.5 km (2 hours) circuit. Follows the creek past silent rainforest pools and Coachwood Falls and the turnoff to **Cedar Falls**. (Allow one hour extra if you take the steep track which zigzags down to the base of Cedar Falls.)

**Casuarina Falls** - 4.8 km (2 hours) return.

A pleasant path along Sassafras Creek arrives at the top of the falls, where a view of McGraths Hump and the Great Escarpment unfolds before you.

**Blackbutt Track** - 6.4km (3 hours) one way.

Best walked from the carpark just inside the park boundary, this track follows the escarpment edge. Return via Dome Road to the carpark is 4 km.

**TAKE CARE:** Walkers may encounter leeches on the walking tracks during damp weather. Simply scrape off with a fingernail and flick away. The large, bright green leaves of the giant stinging tree should also be avoided. Ask the friendly staff at the information desk for more details.

### Geology and landform

Much of the Dorrigo Plateau was once covered by basaltic lava flows from the Ebor Volcano, active until about 18 million years ago. Under the influence of a very high annual rainfall the basalt weathered to form the impressive escarpment and rich soils around Dorrigo. In the northern part of the park and in the valleys the basalt has eroded away to reveal metamorphic and sedimentary rocks from a much earlier period.

### Vegetation

The combination of different soils, varying altitude and bounteous rainfall has produced a rich variety of plant and animal life within Dorrigo National Park. The fertile basaltic soil along the south-west boundary supports subtropical rainforest, which can be seen at its best on the Wonga Walk. A characteristic feature of this type of rainforest is the variety of tree species in the multi-layered canopy. Common species include yellow carabeen, booyong, strangler fig and giant stinging tree, possibly up to five hundred years old. Buttressed trunks, palms, thick woody vines, epiphytic orchids and ferns are also common, adding to the picture of luxuriant vegetation.

In contrast, the warm temperate rainforests occurring on the poorer clay soils around Never Never Picnic Area are less complex, with only two tree layers and fewer canopy species. The warm temperate rainforests are dominated by coachwood, sassafras and crabapple.

The third major forest type in the park is moist eucalypt forest, which can be seen on the more exposed ridges sloping down into the Bellinger Valley. Sydney blue gum, blackbutt and tallowood are the main species with their grey-green crowns contrasting with the darker green of the rainforest canopy in the gullies. These awesome trees are thought to be over a thousand years old and can be seen between the waterfalls on the Wonga Walk.

### Wildlife

Birds are the most noticeable of the park's wildlife with over 120 species having been observed. Subtropical rainforest is a particularly rich habitat for ground dwelling birds that feed on the abundant life within the leaf litter. These include the lyrebird, brush turkey, whipbird, logrunner and noisy pitta, as well as the smaller yellow-throated and white-browed scrubwrens. The treetops are home to a different set of birds - fruit-eating pigeons, king parrots, green catbirds and satin and regent bowerbirds, all of which can often be seen from the Skywalk.

Apart from red-necked and red-legged pademelons, most of the park's mammals are nocturnal. A night walk in the rainforest may reveal ringtail and brushtail possums and sugar, pygmy and greater gliders.

Dorrigo National Park also conserves some interesting reptiles such as the land mullet, carpet and diamond pythons, lace monitor and the rare southern angle-headed dragon.

### More information

NPWS North Coast Region, Dorrigo Plateau Area Office,  
PO Box 170, Dorrigo NSW 2453. Phone: 02 6657 2309



NSW  
NATIONAL  
PARKS AND  
WILDLIFE  
SERVICE

**General inquiries:** 43 Bridge Street Hurstville NSW 2220  
**Phone:** 1300 36 1967 **Fax:** 02 9585 6555  
**Web Site:** [www.nationalparks.nsw.gov.au](http://www.nationalparks.nsw.gov.au)

December 2003. Printed on recycled paper.

